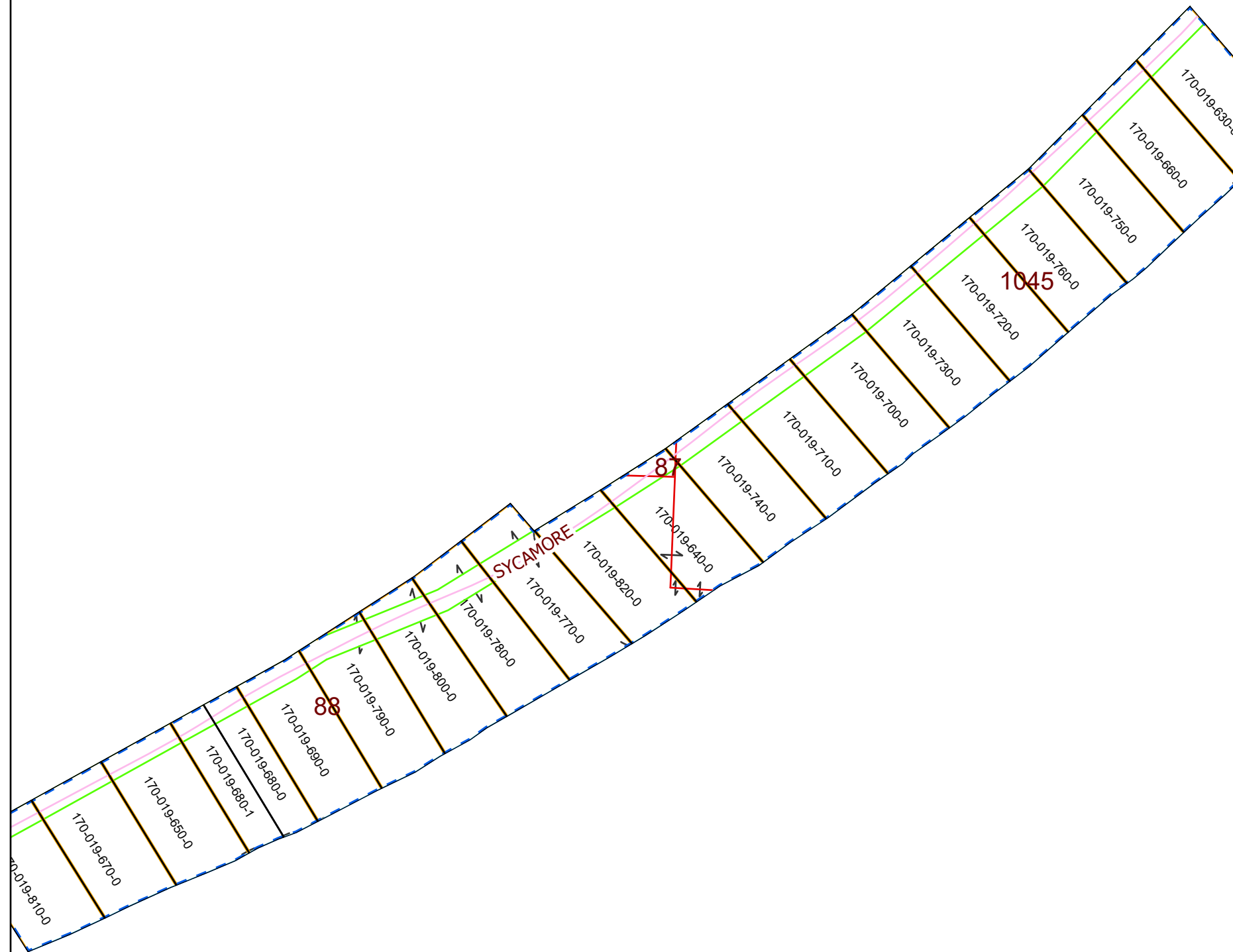


MORGAN COUNTY, OHIO

BALD EAGLE SUB #2
WINDSOR TWP, R-11, T-9, LOTS, 87, 88 & 1045

PIN	Owner	LegalDescr	VOL	PAGE	Acres
170-019-820-0	BULTMAN JOHN H & SUSAN K	BALD EAGLE SD #2	OR205	438	0
170-019-710-0	COLLINS JERRY E & HARVETTE B	BALD EAGLE SD #2	OR90	669	0
170-019-660-0	COMPTON RANDY	BALD EAGLE SD #2	OR233	3393	0
170-019-780-0	DAVIS ROSEANNA & JOHN D JR & REBECCA J ROUSH GARY JR & REBECCA	BALD EAGLE SD #2	OR222	3117	0
170-019-770-0	DAVIS ROSEANNA & JOHN D JR & REBECCA J ROUSH GARY JR & REBECCA	BALD EAGLE SD #2	OR222	3117	0
170-019-740-0	FORSYTHE KIMBERLY A & JEFFREY A YSSELDYKE	BALD EAGLE SD #2	OR104	485	0
170-019-800-0	HENESTOFEL JAMES J & LEANN R	BALD EAGLE SD #2	OR233	128	0
170-019-790-0	HENESTOFEL JAMES J & LEANN R	BALD EAGLE SD #2	OR233	128	0
170-019-700-0	JAMES DAVID B & JEFFREY H WILSON	BALD EAGLE SD #2	OR138	790	0
170-019-730-0	JAMES DAVID B & JEFFREY W WILSON	BALD EAGLE SD 2	OR88	49	0
170-019-670-0	KING SHARON	BALD EAGLE SD #2	OR68	457	0
170-019-760-0	MUSSER DALE A TOD MUSSER DALE A JR AND TAMARA E	BALD EAGLE SD #2	OR203	2297	0
170-019-750-0	MUSSER DALE A TOD MUSSER DALE A JR AND TAMARA E	BALD EAGLE SD #2	OR203	2297	0
170-019-680-1	ORME A DELMER	INLOT 17 PART BALD	OR167	91	0
170-019-650-0	ORME A DELMER	BALD EAGLE SD #2	OR39	2	0
170-019-630-0	PITCHFORD JAMES & SHARON	BALD EAGLE SD #2	OR205	2528	0
170-019-640-0	RIFFLE SHANE E	BALD EAGLE SD #2	OR231	52	0
170-019-810-0	UHL JEROME F TOD-CLARISA LORRAINE SCHORR	BALD EAGLE SD #2	OR197	28	0
170-019-720-0	WILSON JEFFREY H & DEANNA L	BALD EAGLE SD #2	OR231	444	0
170-019-690-0	YOST NELSON E & NONI S	BALD EAGLE SD #2	OR234	1353	0
170-019-680-0	YOST NELSON E & NONI S	BALD EAGLE SD #2	OR234	1353	0



Boundaries	
Type	Color
County	Black
Hidden	Pink
Hydro	Blue
Parcel	Green
ROW	Red
Section	Orange
Lot	Yellow
<all other values>	Grey